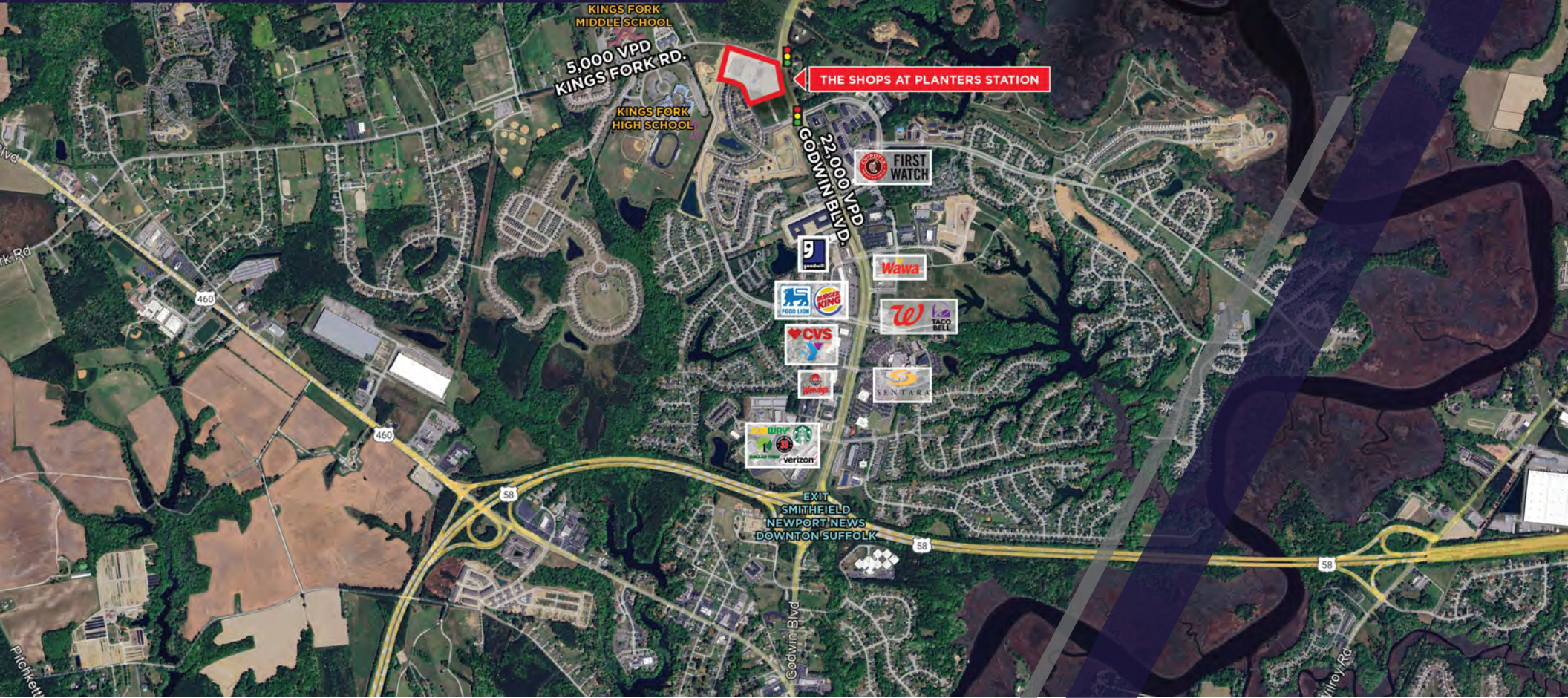


RETAIL FOR LEASE
**THE SHOPS AT
PLANTERS STATION**

3169 GODWIN BOULEVARD, SUFFOLK, VA 23434



 CUSHMAN & WAKEFIELD | **THALHIMER**

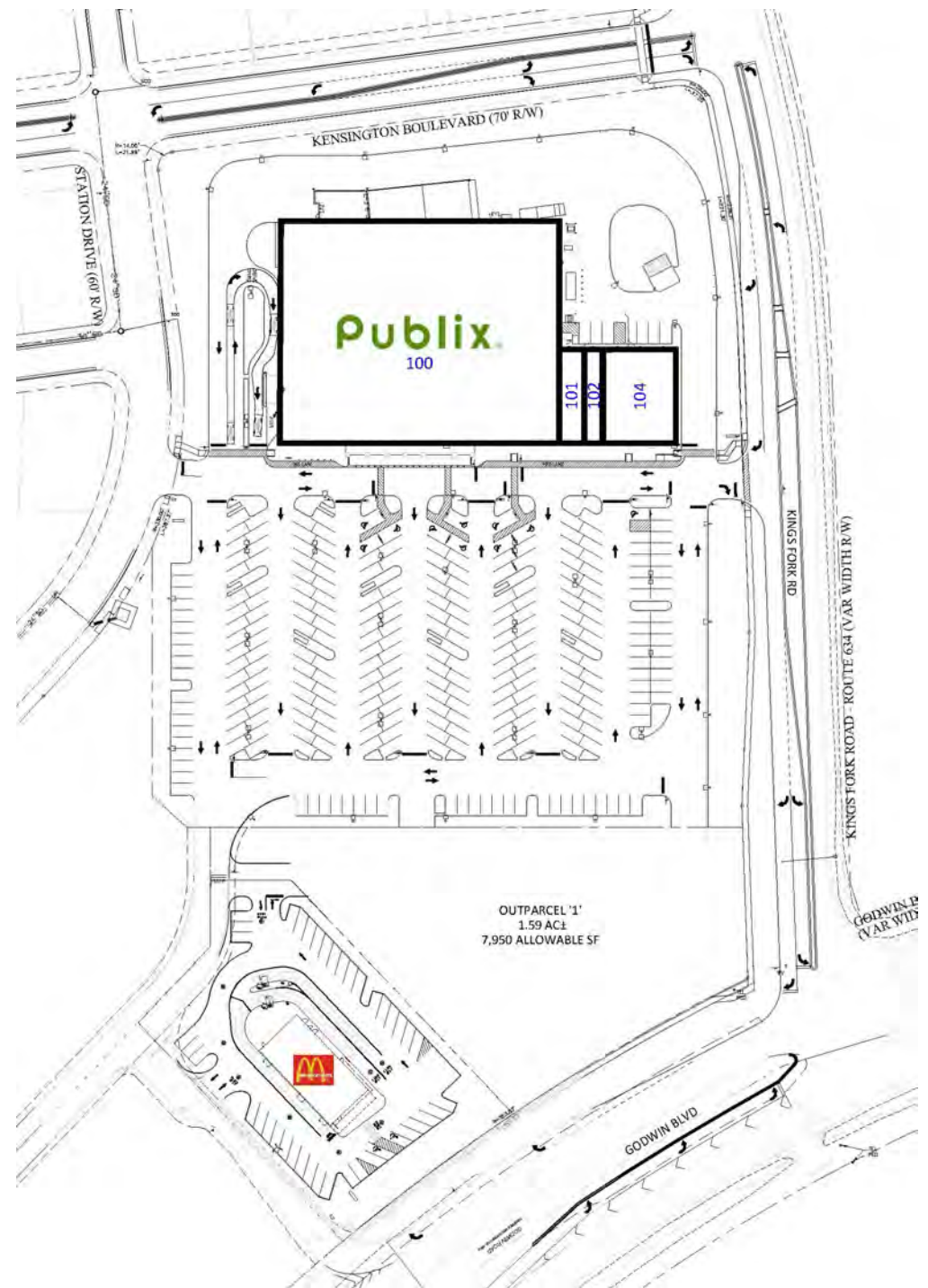
FULLY LEASED

**PUBLIX
NOW OPEN!!**

PROPERTY FEATURES

- **NEW PUBLIX ANCHORED RETAIL PROJECT**
- Located at the signalized intersection Godwin Blvd and Kings Ford Rd.
- Vibrant intersection serving a rapidly growing residential area
- New retail drivers of activity including banks, convenience store, fast food and medical uses
- **Join new Tenants: LaParilla Mexican Restaurant (Suite 104), Great Clips (Suite 102) & City Nail Spa (Suite 101)**
- **[VIEW WEBSITE](#)**

Demographics			
	1 Mile	3 Mile	5 Mile
Population	6,729	18,924	47,303
Households	2,884	7,300	18,903
Avg. Household Income	\$126,491	\$148,169	\$118,530
Daytime Population	7,462	19,919	45,967



PROPERTY FEATURES



SURROUNDING BUSINESSES

Publix the Y YMCA
Wawa SENTARA FOOD LION

This block contains a collection of logos for surrounding businesses. At the top, a dark blue banner reads 'SURROUNDING BUSINESSES'. Below this, the logos for Publix, the Y (YMCA), Wawa, Panera Bread, McDonald's, SENTARA, and Food Lion are displayed in a grid-like arrangement.

THE SHOPS AT PLANTER STATION



DAVID CRAWFORD
First Vice President
804 697 3446
david.crawford@thalhimer.com

KEVIN SOUTH
Vice President
804 344 7181
kevin.south@thalhimer.com

Independently Owned and Operated / A Member of the Cushman & Wakefield Alliance

Cushman & Wakefield | Thalhimer © 2025. No warranty or representation, express or implied, is made to the accuracy or completeness of the information contained herein, and same is submitted subject to errors, omissions, change of price, rental or other conditions, withdrawal without notice, and to any special listing conditions imposed by the property owner(s). As applicable, we make no representation as to the condition of the property (or properties) in question.